



CIRCUIT
SPORT TO ENJOY **”**

SALTER
ACTIVEHEALTH

An aerial photograph of a gym with a dark grey tiled floor. Several people are using exercise machines. A woman in a white shirt and blue pants is on a recumbent bike. A woman in a grey tank top is on another recumbent bike. A man in a grey shirt and black shorts is on a seated machine. A woman in a blue outfit is on a recumbent bike. A man in a dark shirt is on a treadmill. A yellow dotted line traces a path through the scene.

Workou**T**

Intensity

Union

An aerial photograph of a gym circuit. Five people are using different pieces of exercise equipment. The equipment is arranged in a circular pattern. A dotted yellow line starts at the top left and curves around the equipment. The background is a dark grey tiled floor.

Conceptual

Circuit line by SALTER,
a group of machines with a hydraulic re-
sistance system, designed to workout
the main muscles groups in a secure,
easy and fun way.

Intuition

Rhythm

Constancy

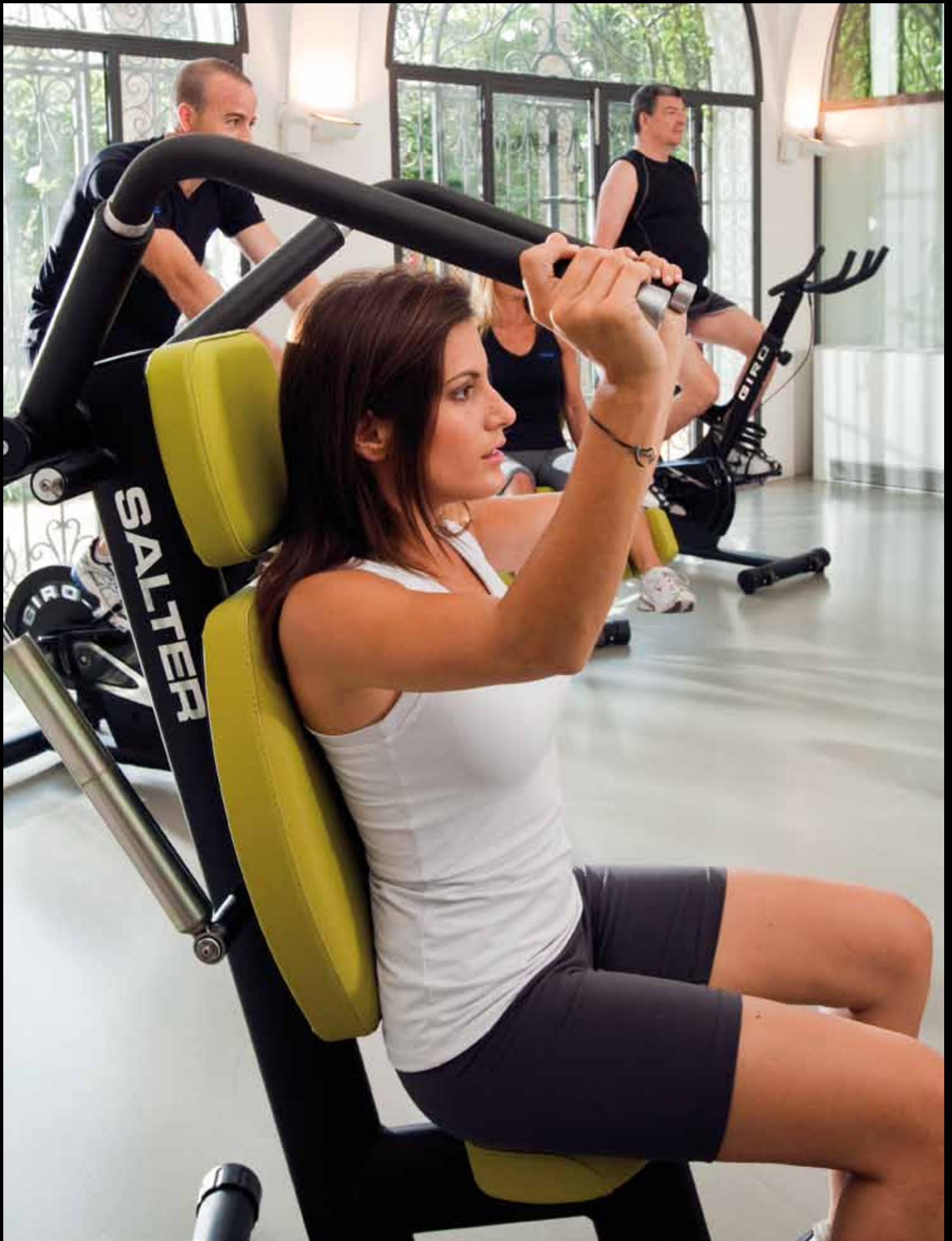


Total Wellness

The versatility of the **Circuit Line** allows to use it, in multiple settings (gyms, residential complex, hotels, spas, home use, ...), with any kind of users, independently of their physical condition, experience and objectives.









Sharing goals

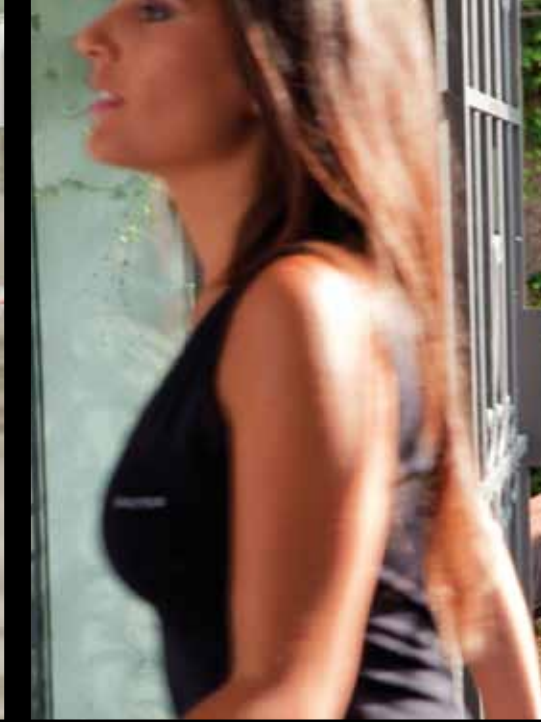
SALTER's proposal is to use all the range of machines of the **Circuit Line** for a toning workout, led by an instructor to the rhythm of the music. We can combine it with multiple complements (steps, bikes, gym balls, etc...).



We bring **health** where you are

The **Circuit Line**'s resistance hydraulic system allows to practice agonist and antagonist muscles with the same movement. The balance of the muscle structures that affect the major joints of the body, is guaranteed. This is the reason why, this **Circuit Line** is suggested to the rehab processes in case of injuries.





CIRCUIT LINE ”



† M-140 | HORIZONTAL PRESS / PULL



† M-176 | VERTICAL PRESS / PULL



† M-187 | LEG PRESS



† M-120 | BICEPS / TRICEPS



† M-183 | ABDUCTORS / ADDUCTORS



† M-147 | AABDOMINAL / LUMBAR



† M-126 | QUADRICEPS / FEMORAL



† M-184 | PECTORAL / SCAPULAR ZONE



† M-185 | SQUAT / CALVES

TECHNICAL FEATURES

- Elliptical frame painted in matte black colour.
- Wheels for an easy moving.
- Anti-bacterial upholstery available in dark grey, orange, green pistachio and bordeaux. ■ ■ ■ ■
- Adjustable hydraulic resistance in extension and compression in a single command.
- Light alloy piston plunger 36 mm sintered. ith internal and independent deposits of oil and nitrogen.
- Anatomical seats, armrests and leg rests.
- Handlebars and grips coated in a non-porous rubber.
- Polyurethane swivel leg rests.
- Non-slip footrest platform.



SALTER INTERNATIONAL OFFICES

Lluís Millet, 52

08950 Esplugues del Llobregat

BARCELONA, Spain

Ph.: (+34) 934 700 055

Cell.: (+34) 628 990 661

Fax: (+34) 933 724 355

e-mail: internationalsales@salter.es

www.salter.es

SALTER
ACTIVEHEALTH