

Functional Training

Balls

Ropes

Tyres & Bags

Functional Bags

Benches

Platforms

Resistance

Suspension

Elastic Bands

Floor Training

Hurdles & Cones

Multiple Rack



AEROBIC & FITNESS
EQUIPAMIENTO Y FORMACIÓN

**BUILD
YOUR BEST
VERSION**

O'LIVE FUNCTIONAL BALL

| | | | | | | |
|----------------|------------|------------|-------------|------------|------------|------------|
| Ref: | BA06501.00 | BA06505.00 | BA06502.00 | BA06506.00 | BA06503.00 | BA06507.00 |
| Weight: | 3 kg | 4 kg | 5 kg | 6 kg | 7 kg | 8 kg |
| Colour: | Green | Yellow | Orange | Red | Maroon | Lilac |
| | BA06504.00 | BA06508.00 | BA06509.00 | BA06510.00 | | |
| | 9 kg | 10 kg | 12 kg | 15 kg | | |
| | Grey | Black | Olive Green | Blue | | |



Functional Balls all have a diameter of 39 cm regardless of their weight. With a soft and pleasant textile surface, their main characteristic is to absorb impacts, facilitating partner throwing exercises during training.

Made with a new higher-grip textile surface and in a more compact size, they are used for a wide variety of functional exercises. They do not bounce. Note: Not suitable for throwing and/or exercises involving the ball impacting the floor, as this fatigues the casing and may cause

O'LIVE MINI FUNCTIONAL BALL



| | | | | | |
|----------------|------------|------------|------------|------------|------------|
| Ref: | BA10001.00 | BA10002.00 | BA10003.00 | BA10004.00 | BA10005.00 |
| Weight: | 1 kg | 2kg | 3 kg | 4 kg | 5 kg |
| Colour: | Sky blue | Green | Yellow | Orange | Red |
| | BA10006.00 | BA10007.00 | BA10008.00 | BA10009.00 | BA10010.00 |
| | 6 kg | 7 kg | 8 kg | 9 kg | 10 kg |
| | Maroon | Lilac | Blue | Grey | Black |



| | | | | | | | | | | |
|--------------------|------------|------------|------------|------------|------------|------------|------------|------------|------------|------------|
| Ref: | BA09001.01 | BA09002.01 | BA09003.01 | BA09004.01 | BA09005.01 | BA09006.01 | BA09007.01 | BA09008.01 | BA09009.01 | BA09010.01 |
| Dimensions: | ø17 cm | ø17 cm | ø19 cm | ø19 cm | ø19 cm | ø25 cm | ø25 cm | ø25 cm | ø25 cm | ø25 cm |
| Weight: | 1 kg | 2 kg | 3 kg | 4 kg | 5 kg | 6 kg | 7 kg | 8 kg | 9 kg | 10 kg |

O'LIVE SLAM BALLS

| | | | | | | | |
|--------------------|------------|------------|------------|------------|------------|------------|------------|
| Ref: | BA08901.00 | BA08902.00 | BA08903.00 | BA08904.00 | BA08905.00 | BA08906.00 | BA08907.00 |
| Dimensions: | ø22 cm | ø22 cm | ø22 cm | ø29 cm | ø29 cm | ø29 cm | ø29 cm |
| Weight: | 3 kg | 6 kg | 9 kg | 12 | 15 kg | 20 k | 25 |



Our O'Live Fitness Slam Balls are sand-filled and manufactured from high-resistance rubber, providing a smooth but firm grip that facilitates throwing movements. You can choose from a wide variety of weights, from 5 to 60 kg, adapting to your level and training objectives. Start incorporating Wall Ball Shots, Slam Balls and Power Cleans into your routine today.

O'LIVE MEDICINE BALL WITH HANDLES

O'Live Medicine Balls with double grip handle allow improvement in the execution of countless mobility exercises, HIIT and basic loading exercises. They are ideal for functional training, individual use or group classes as well as rehabilitation or personal training. Available in a range from 3 to 10 kg.



BA09208.01
10 kg
Black

O'LIVE MEDICINE BALL

The O'Live Medicine Ball is an essential tool in any functional training facility, designed to develop strength, power, stability and neuromuscular capabilities. It is widely used in fitness conditioning programmes, rehabilitation sessions, HIIT training and functional circuits.

O'LIVE MEDICINE BALL REBOUNDER



Ref: EN47800.00
Dimensions: 100 x 100 x 95 cm



O'LIVE RESIST BATTLE ROPE

Ref: EN37700.00 EN32200.00
Weight: 35 kg 48 kg
Colour: Grey Grey

O'LIVE BATTLE ROPE

Ref: EN50201.00 EN50202.00 EN50203.00
Dimensions: 9 m 12 m 15 m

MEDICINE BALLS COMPAC STORAGE UNIT



Ref: MU03700.01
Dimensions: 37 x 35 x 130 cm
Capacity: 5 med. balls / 4 func. balls

Ref: MU03800.01
Dimensions: 62 x 35 x 130 cm
Capacity: 10 med. balls / 8 func.

Ref: MU03900.01
Dimensions: 110 x 35 x 130 cm
Capacity: 20-25 med. balls

MEDICINE BALLS RACK O'LIVE FITNESS 5 U.

Ref: MU23000.00
Dimensions: 74x56x176.5 cm
Colour: Dark Grey
Capacity: [Follow the link for different combinations](#)



The rack is designed to organise functional equipment efficiently. Its standard configuration includes 5 supports, ideal for storing medicine balls, mini functional balls or functional bags. It can also hold functional balls, shoulder bags and more.

Balls not included. (includes only 5 storage rings)



O'LIVE CLIMBING ROPE

Ref: ST22500.00
Dimensions: ø 3,8 x 600 cm

For explosive sprinting, rotational movements and lateral movements. Dimensions: 2.70 m to 3 m in length.



O'LIVE CLIMBING ROPE WITH LOOP

Ref: ST21200.00
Dimensions: ø 4 x 500 cm



ROPE ANCHOR PROTECTOR O'LIVE

Ref: EN50900.00

BATTLE ROPE ACCESSORY

Ref: ES17400.01
Accessory for battle ropes or other products that require a fixing point for use
Bar not included



O'LIVE COMPACT ROPE SUPPORT O'LIVE

Ref: MU10100.01
Dimensions: 75 x 7,5 x 15 cm

Wall-mount support suitable for storing training ropes.



O'LIVE FUNCTIONAL TYRE



| | | | |
|----------------|------------|------------|------------|
| Ref: | EN54501.00 | EN54502.00 | EN54503.00 |
| Weight: | 40 kg | 60 kg | 80 kg |
| Colour: | Green | Orange | Red |



FUNCTIONAL TYRE

You can perform a variety of functional pushing, pulling and deadlift exercises. It consists of a tyre covered with a PVC sleeve and riveted handles to facilitate exercises.

| | |
|--------------------|------------|
| Ref: | EN45500.01 |
| Dimensions: | Ø 105 cm |
| Weight: | 68 kg |



O'LIVE STRONGMAN BAG

| | | | |
|----------------|------------|------------|------------|
| Ref: | EN54302.00 | EN54303.00 | EN54301.00 |
| Weight: | 65 kg | 90 kg | 45 kg |

Strongman sandbags are a versatile alternative to heavy stones. Made from 1000D Cordura Nylon, their reinforced double stitching is highly resistant, withstanding occasional drops.



O'LIVE FUNCTIONAL BAG



Ref: EN47401.01 Ref: EN47402.01 Ref: EN47403.01
 Weight: 5 kg Weight: 10 kg Weight: 15 kg
 Dim: d 20 x 52 cm Dim: d 20 x 52 cm Dim: d 21 x 56 cm

Ref: EN47404.01 Ref: EN47405.01
 Weight: 20 kg Weight: 25 kg
 Dim: d 24 x 60 cm Dim: d 22 x 63 cm

O'LIVE WEIGHTED VEST

Ref: EN47601.00 EN47602.00
 Weight: 10 kg 20 kg



The vest incorporates individual weights, each secured in its own pocket by velcro. The 10 kg vest features 6 front pockets and 6 rear pockets, whilst the 20 kg version features 8 front pockets and 8 rear pockets, ensuring a uniform weight distribution.

O'LIVE COMPACT FUNCTIONAL BAGS RACK

Ref: MU11700.01
 Dimensions: 60 x 92 x 165 cm
 Capacity: 12 u



O'LIVE FUNCTIONAL BAGS RACK

Ref: MU10500.00
 Dimensions: 73 x 66 x 150 cm
 Capacity: 5 u



O'LIVE SHOULDER BAG



The O'live Fitness shoulder bag is typically used, as the name suggests, across the shoulders for core and strength training. Dynamic and ballistic movements are performed using the standard front handles, and it incorporates rear handles for greater versatility.

Ref: EN40904.00 Ref: EN40901.00 Ref: EN40902.00 Ref: EN40903.00 Ref: EN40905.00
 Weight: 15 kg Weight: 5 kg Weight: 8 kg Weight: 12 kg Weight: 18 kg
 Colour: Purple Colour: Yellow Colour: Orange Colour: Red Colour: Black



O'LIVE SAND DISC



Ref: EN47501.00 Ref: EN47502.00 Ref: EN47503.00 Ref: EN47504.00 Ref: EN47505.00 Ref: EN47506.00
 Weight: 2 kg Weight: 4 kg Weight: 6 kg Weight: 8 kg Weight: 10 kg
 Colour: Green Colour: Yellow Colour: Orange Colour: Red Colour: Pink Colour: Purple



Ref:
Weight:
Colour:

O'LIVE SANDBAG

Ref: EN62601.00
Weight: 10 kg
Dimensions: d 22 x 54 cm

Ref: EN62602.00
Weight: 20 kg
Dimensions: d 26 x 60 cm

Ref: EN62603.00
Weight: 30 kg
Dimensions: d 30 x 62 cm



O'Live sandbags are a versatile and resistant tool, ideal for functional training including exercises such as squats, lunges, rotational movements and specific HYROX sessions.

Made from highly durable synthetic PVC, they are designed to withstand intensive use in gyms and training centres. They feature 7 strategically distributed TPR handles, allowing a wide variety of grips and exercises.

The zip and velcro flap closure system guarantees safety during use, whilst the reinforced double nylon-stitched seams provide greater resistance. They include inner polyester bags filled with sand, with a visible weight indicator for quick identification.

Available in different loads to suit different training levels. Weight tolerance: +/- 3%. Their stability also minimises the risk of accidents.



O'LIVE CORE WHEELS

Ref: EN33700.00

They allow you to strengthen the entire abdominal area and improve flexibility by performing a greater variety of movements. Sold in pairs.



O'LIVE AB WHEEL O'LIVE

Ref: EN33800.00



O'LIVE SLED

The sled is designed for the development of lower body strength, endurance and power.

It features flat skis that allow use on different smooth surfaces, facilitating pushing and pulling exercises. It is compatible with Olympic discs, allowing the training load to be adjusted.

Includes two types of push bars and multiple anchor points for use with a harness. Features low-friction bases on each ski, optimising use on rubber flooring or non-slip surfaces.

Discs not included.



Ref: EN51300.00
Dimensions: 610 x 1020 x 980 mm
Weight: 36 kg



O'Live Deck Exercise Platform

It is a highly versatile piece of fitness equipment that can be used as a standard step or as an adjustable reclining bench for performing various exercises with bars and dumbbells.

Features integrated height bases at different levels and four positions for the backrest.

Features slots for resistance band training and a storage drawer in the interior.

Dimensions: 110 x 33 x 20 cm

Dimensions with legs extended: 120 x 33 x 35 cm Weight: 12.25 kg

O'LIVE DECK

Ref: ST23700.00
Dimensions: 110 x 33 x 20 cm
Weight: 8,5 kg

O'LIVE
FITNESS



O'LIVE FUNCTIONAL BENCH

Ref: EN52800.02
Dimensions: 118 x 43 x 55 cm
Weight: 75 kg



Designed to store functional training equipment whilst also providing a useful support for exercise execution as well as a jump platform.

- Steel construction.
- Wheels and handle for easy movement.
- Rings for attaching resistance bands.
- Stores up to 6 pairs of 15 kg dumbbells, 2 kettlebells and 1 slam ball. Equipment not included.
- Features a drawer for storing equipment such as resistance bands, jump ropes, etc.
- Customisation available.



Antibacterial, waterproof upholstery and high-density foam



Rubber
Wheels

Rubber
dumbbell
protector

Levelling feet



GHD BENCH

O'LIVE

Ref: EN51500.01
Dimensions: 197 x 76 x 127 cm
Weight: Peso: 79 kg

The fitness revolution begins with the **O'Live Fitness GHD Bench**. Designed to provide incomparable stability, this bench becomes your essential tool for strengthening the core, as well as the hamstrings and glutes. Immerse yourself in an unparalleled exercise experience with our latest-generation GHD Bench.



Rubber
Dumbbell



Unmatched Stability

Experience an unparalleled level of stability during your training sessions. The precisely dimensioned bench design, combined with rubber-protected feet, ensures solid support in every movement.

Personalised Adjustment

This bench adapts to your needs. Adjust the position both vertically and horizontally quickly and easily, allowing you to personalise the distance according to your preferences and training objectives.

High-Density Padding

Immerse yourself in comfort with our voluminous high-density foam padding. Each exercise session becomes an ergonomic experience that maximises your performance.

Comprehensive Core Focus



O'LIVE JUMP PLATFORM

They are lightweight and trapezoidal in shape. They feature a rubber surface for greater grip and cushioning.

| | | | | | |
|--------------------|-----------------|-----------------|-----------------|-----------------|-----------------|
| Ref: | EN47701.00 | EN47702.00 | EN47703.00 | EN47704.00 | EN47705.00 |
| Dimensions: | 34 x 34 x 15 cm | 42 x 42 x 30 cm | 51 x 51 x 45 cm | 57 x 54 x 60 cm | 63 x 63 x 76 cm |



O'LIVE FOAM JUMP PLATFORM

The foam jump platform provides a safe and stable base that eliminates risk. Available in different heights, they can be stacked on top of each other and secured with velcro. Made from high-density EVA foam.

| | | | | |
|--------------------|-----------------|-----------------|-----------------|-----------------|
| Ref: | EN50401.00 | EN50402.00 | EN50403.00 | EN50404.00 |
| Dimensions: | 76 x 15 x 90 cm | 76 x 30 x 90 cm | 76 x 45 x 90 cm | 76 x 60 x 90 cm |

ADJUSTABLE PLATFORM

| | |
|--------------------|-----------------|
| Ref: | EN52200.00 |
| Dimensions: | 75 x 60 x 50 cm |



Allows three different heights: 50, 60 and 75 cm.

O'LIVE ADJUSTABLE WOODEN PLATFORM

| | |
|--------------------|-----------------|
| Ref: | EN50300.00 |
| Dimensions: | 75 x 60 x 50 cm |



O'LIVE FITNESS FOAM THRUST BENCH

Take your training to the max with the O'Live Hip Thrust. This professional piece of equipment combines elegance with proven quality, being the ideal option for intensively working the posterior lower body muscles. Perfect for hip thrust exercises, push-ups and glute toning, its versatility makes it an essential accessory for a wide variety of routines.

The O'Live Hip Thrust is manufactured from EPE foam and coated with non-slip PVC, providing a firm base that minimises unwanted movements during exercise, guaranteeing stability and safety. Its ergonomic design offers comfort in every repetition, and its light weight of only 2 kg, combined with easy maintenance, makes it ideal for any training space.



| | |
|--------------------|-------------------|
| Ref: | EN62501.00 |
| Dimensions: | 44 x 30,5 x 100cm |



| | |
|--------------------|------------------|
| Ref: | EN62502.00 |
| Dimensions: | 44 x 30,5 x 60cm |





BALANCE BOARD O'LIVE

Ref: EN54700.00
Dimensions: Ø 40 x 8 cm



O'LIVE EQUIPMENT

Ref: MU09900.00
Dimensions: 65 x 135 x 78 cm
Colour: Grey

O'LIVE CLUBBELLS RACK

Can store one pair of Clubbells per weight.



Ref: MU12000.00
Capacity: 6 pairs (1 pair per weight)

O'LIVE CLUBBELLS



| | | | | | |
|-------------------------------|-----------------|-----------------|-----------------|-----------------|-----------------|
| Ref: EN39101.01 | EN39102.01 | EN39103.01 | EN39104.01 | EN39105.01 | EN39106.01 |
| Weight: 2 kg | 4 kg | 6 kg | 8 kg | 10 kg | 12 kg |
| Other: Ø Agarre: 17 mm | Ø Agarre: 25 mm | Ø Agarre: 29 mm | Ø Agarre: 32 mm | Ø Agarre: 32 mm | Ø Agarre: 35 mm |



O'LIVE TRIPLE JUMP ROPE

Ref: ST22400.00

Made from plastic, it is lightweight and allows fast jumping. The desired length can be shortened using a metal screw closure.



O'LIVE JUMP ROPE

Ref: EN51900.00

Features bearings in the aluminium handles for a more precise rotation. The steel cable is coated in nylon for greater protection.





RESIST O'LIVE ELASTIC



Covered with a protective nylon sleeve that protects it from abrasion, moisture and dehydration.

| | | | | |
|--------------------|------------|------------|------------|--------------|
| Ref: | ST00801.00 | ST00802.00 | ST00803.00 | ST00804.00 |
| Dimensions: | 120 cm | 120 cm | 120 cm | 120 cm |
| Colour: | Yellow | Green | Red | Blue |
| Intensity: | Light | Medium | Strong | Extra Strong |
| | ST05501.00 | ST05502.00 | ST05503.00 | ST05504.00 |
| | 240 cm | 240 cm | 240 cm | 240 cm |
| | Yellow | Green | Red | Blue |
| | Light | Medium | Strong | Extra Strong |

O'LIVE RESIST BELT

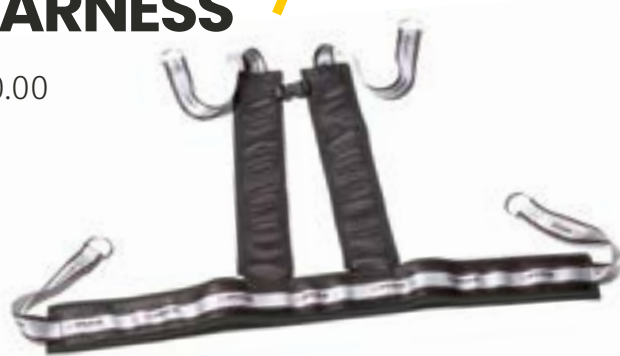
Ref: ST20600.00

Buckle fastening. Metal rings secure the elastic bands and it features neoprene padding for greater comfort.



O'LIVE RESIST HARNESS

Ref: EL13800.00



O'LIVE ANCHOR STRAP

Ref: EL13900.00
Other: Length: 43 cm

Designed to attach resistance bands. Can be looped around posts or supports or held by hand.



O'LIVE RESIST ELASTIC HANDLES

Ref: ST16300.00

Slightly flexible for optimum grip. Resistant and hygienic. Sold in pairs.



O'LIVE ARM STRAP

Ref: EN45100.00

Velcro fastening. The metal ring allows elastic bands to be attached.



O'LIVE RESIST ANKLE STRAP

Ref: ST20700.00

Velcro fastening. Metal rings allow elastic bands to be attached.



O'LIVE RESIST DRAG BELT

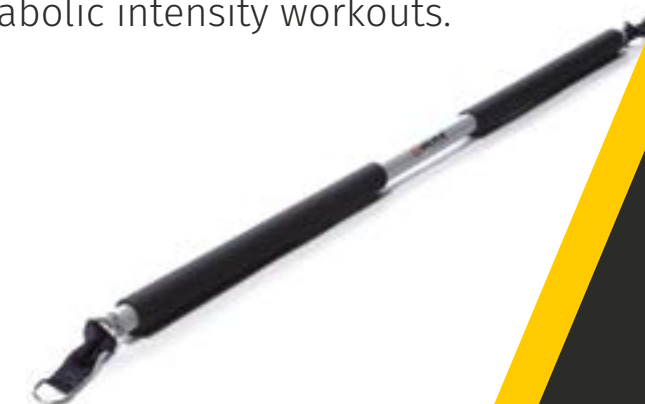
Designed for movement in any direction up to 240° (front and lateral). Neoprene-padded for greater comfort.



Ref: EN45000.00

O'LIVE RESIST BAR

The bar is covered with a non-porous high-density rubber that allows a comfortable and secure grip. It is ideal for explosive strength training whilst achieving high metabolic intensity workouts.



Ref: ST00100.00
Dimensions: 105 x ø 3 cm

O'LIVE FUNCTIONAL UNLIMITED KIT VEST

Ref: EN44000.00



O'LIVE VARIABLE RESIST KIT

Ref: EN44600.00

Comprises 2 belts and 1 strong resistance elastic band of 1.2



O'LIVE FUNCTIONAL HURDLE

Ref: EN39200.00
 Dimensions: 38 x 60 x 73 cm
 Colour: Red



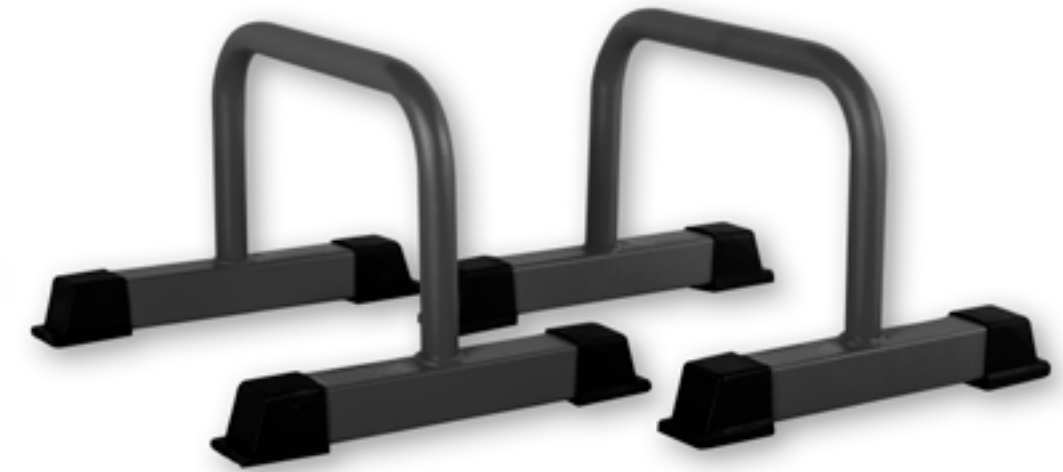
CROSS PARALLETES O'LIVE

Ref: EN52600.00
 Dimensions: 33 x 56 x 30 cm



CROSS PARALLETES CLASSIC O'LIVE

Ref: EN56700.01
 Dimensions: 41 x 41 x 31 cm
 Weight: 12 kg
 Other: asa ø 32 cm



O'LIVE PRO PUSH UP BAR

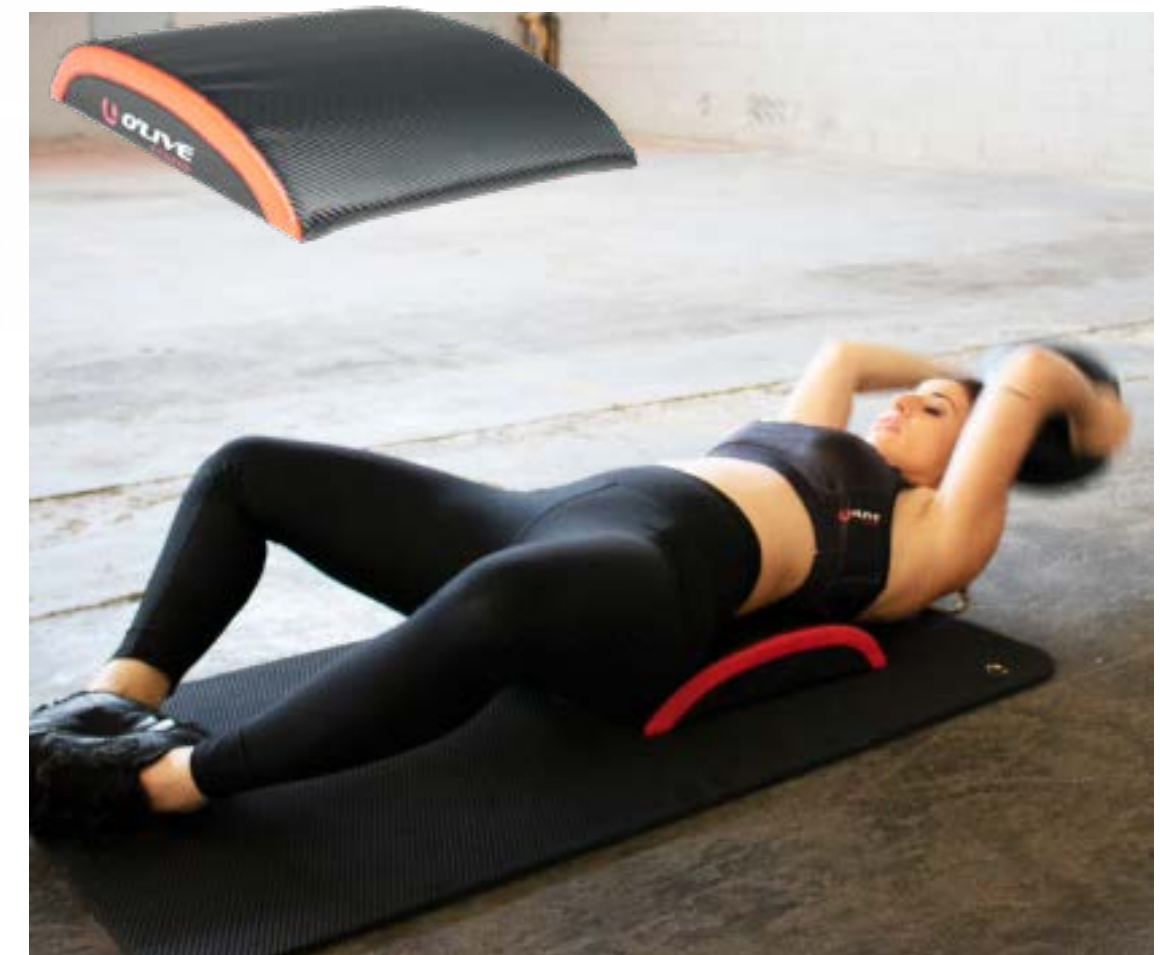
Ref: EN36300.00



Designed to relieve tension in the wrists and hands. The vinyl grip provides comfort and durability. Round design with rubber base for maximum stability and grip. Sold in pairs.

AB MAT O'LIVE

Ref: EN51400.00
 Dimensions: 39 x 30 x 9 cm



O'SKY SUSPENSION TRAINER O'LIVE



Ref: EN44300.01

The O'Sky fitness suspension straps offer an innovative solution for functional training, incorporating a pulley that allows bilateral exercises and dynamic movements in multiple planes.

The unlocked pulley system facilitates a more fluid and natural movement, whilst the bolt-lock allows training to be adapted to beginner users or more controlled exercises.

Designed to enhance functional strength, they promote activation of the stabilising muscles, improving core control, coordination and joint mobility.

Includes a 96 cm attachment strap. Ideal for gyms, personal training and physical conditioning.

CEILING MOUNT FOR SUSPENSION TRAINER



Ref: EN43700.01

Designed to fix the suspension system to the ceiling or wall.



BOSU® STORAGE UNIT COMPAC O'LIVE

Ref: MU08500.02

The O'Live BOSU® Compact Rack is a practical and robust solution for the organised storage of BOSU® Balance Trainers and BOSU® Elite units in sports facilities.

Manufactured from high-durability Compact material, it incorporates individual supports that guarantee stability and proper care of the equipment. Its vertical and compact design allows the space in training areas to

whilst also facilitating access and organisation.

Easy to maintain and highly robust, it is ideal for gyms, studios and sports centres seeking efficiency and order in their training zone.

Dimensions: 70 x 40 x 185 cm.
BOSU® not included.



O'LIVE SUSPENSION

Ref: EN54800.00



DISCOS DESLIZANTES O'LIVE

Ref: ST25700.00



O'LIVE WOODEN SUSPENSION RINGS

They are made from wood and use a 4.3 m adjustable nylon strap with numbering. Ring diameter of 23 cm and ϕ 2.8 cm grip.

Ref: EN50600.00
Dimensions: ϕ 23 cm



Sliders O'Live

They provide a sliding training surface. They allow multiple muscle groups to be worked whilst the core muscles are activated during movement execution, Sliders transform exercises into fluid and smooth movements.
Note: not suitable for rubber flooring.

Ref: ST22101.00



O'LIVE AB STRAPS

Ref: EN50700.00

They attach quickly to any pull-up bar for ab-defining workouts just like the professionals do. Experienced professionals use O'Live Fitness Abs Straps to perform ab crunches and leg raises from the floor. The AB STRAP is resistant, comfortable and designed for long durability. Made from high-resistance nylon straps and extra comfortable.





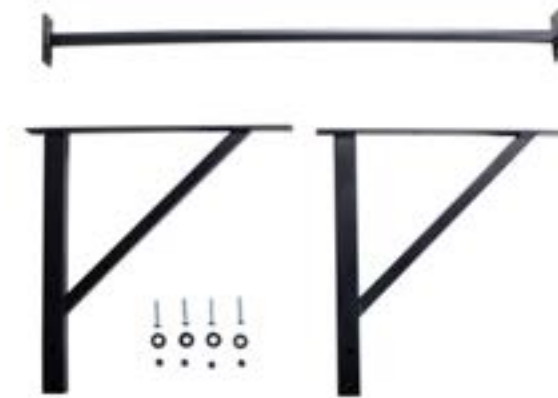
O'LIVE MULTI-GRIP PULL-UP BAR

The bar features multiple grip options allowing users to perform different exercises.

O'LIVE PULL-UP BAR

32 mm diameter bar for wall mounting and performing pull-ups. Solid steel construction with a textured black finish and a maximum capacity of 500 kg. Allows connection of the extension (ref: EN51700) to create an integrated line for multiple users.

Ref: EN50100.01
Dimensions: 920 x 580 x 1300 mm
Other: Complete



Versatile design for personalised training

One of the most outstanding features of this bar is its ability to adapt to different training needs. Thanks to its design that allows connection of the extension (ref: EN51700), you can create a perfect integrated line for multiple users, ideal for group training or families who enjoy exercising together. This modular design gives you the flexibility to customise your training area according to the available space and the exercises you wish to perform. Furthermore, its 32 mm diameter is ideal for a variety of calisthenics and pull-up exercises.

Professional-quality durability

Manufactured to the highest quality standards, this bar is built to last. The solid steel used in its construction not only guarantees exceptional durability, but also resists wear and tear, making it an excellent long-term investment. The textured finish does not wear easily, ensuring a firm grip even after extensive use. This training bar is perfect for both professionals and

O'LIVE WEIGHT BELT

Ref: PL37300.00
Dimensions: 110 cm

Made from resistant nylon, it provides total freedom of movement. Includes a 110 cm zinc-plated chain with carabiners for secure attachment during exercise.



Ref: EN41000.02
Dimensions: 115 x 52 x 18 cm



SUPERBANDA 1M O'LIVE

All bands are made from 100% natural latex manufactured through a layering process to ensure a long service life. 1 m long.



| | | | | |
|------------------------------|--------------------------------|-------------------------------|--------------------------------|-----------------------------------|
| EL08302.00 Black Light | EL08303.00 Yellow Medium | EL08304.00 Green Strong | EL08305.00 Blue X Strong | EL08306.00 Orange XX Strong |
|------------------------------|--------------------------------|-------------------------------|--------------------------------|-----------------------------------|

O'LIVE SUPERBAND GRIP

The handle designed for superbands offers versatility and ergonomics in your exercises. Made from plastic with textured rubber. (bands not included)

Ref: EN62400.00



O'LIVE TEXTILE LOOPS

Ref: EL14601.00 EL14602.00 EL14603.00 EL14603.00



O'LIVE LOOPS

| | | | |
|-------------|-------------|-------------|-------------|
| Ref: | EL06201.00 | EL06202.00 | EL06203.00 |
| Dimensions: | 280 x 13 mm | 280 x 13 mm | 280 x 13 mm |
| Colour: | Amarillo | Rojo | Verde |
| Intensity: | Ligera | Media | Fuerte |



O'LIVE LOOPS XL

| | |
|-------------|------------|
| Ref: | EL14302.00 |
| Dimensions: | 5 x 28 cm |
| Colour: | Green |
| Intensity: | Medium |



O'LIVE 2M SUPERBAND

| | | | | |
|-------------|---------------------|---------------------|---------------------|---------------------|
| Ref: | EL14201.00 | EL14202.00 | EL14203.00 | EL14204.00 |
| Dimensions: | 0,45 x 200 x 1,3 cm | 0,45 x 200 x 1,9 cm | 0,45 x 200 x 2,1 cm | 0,45 x 200 x 2,9 cm |
| Colour: | Lilac | Red | Black | Yellow |
| Intensity: | XX Light | X-Light | Light | Medium |

They allow exercises to be performed with a greater range of



ACCELERATOR STROOPS

Ref: EL03501.00 EL03502.00
Intensity: 48 kg 68 kg



O'LIVE LATERAL RESISTOR

The ankle straps feature velcro fastening and are padded for greater comfort.

Ref: EL13601.00 EL13602.00
Intensity: Medium Strong

O'LIVE SPEED SLED

Used for power training, it incorporates 3 removable bags of 5 kg each.

Ref: EN43200.00



O'LIVE SPEED LADDER

Ref: EN01200.01



O'LIVE HURDLE

Ref: EN42601.00 EN42602.00 EN42603.00
Dimensions: 45 x 22 x 15 cm 45 x 22 x 23 cm 45 x 22 x 30 cm



O'LIVE ADJUSTABLE HURDLES

Ref: EN42700.00



O'LIVE AGILITY HEXAGONS

Ref: EN42500.00



FLAT RING

Ref: EN00601.00 EN00602.00 EN00603.00
Dimensions: ø 36 cm ø 50 cm ø 61 cm
Colour: Assorted Assorted Assorted

O'LIVE AGILITY DOT

Ref: EN51000.00
Dimensions: ø 25 cm
Colour: Red



HALFBALL

Ref: EN02000.01
Dimensions: ø 14 cm



O'LIVE SPEED CONE

Ref: EN42800.00
Dimensions: ø 7 x 28 cm
Colour: Red



O'LIVE SPEED CONE KIT

Ref: EN42900.00



O'LIVE SLALOM POLE

Ref: EN43100.00 EN43400.00
Dimensions: 1,70 m 1 m
Colour: Yellow Yellow



O'LIVE REACTION BALL

Ref: BA09700.00
Dimensions: ø 10 cm
Colour: Red



ADJUSTABLE CONE + POLE KIT

Ref: EN01100.00

O'LIVE SLALOM POLE BASE

Ref: EN43000.00
Dimensions: ø 16 x 24 cm



MULTIPLE RACK O'LIVE

Two columns are required to create a module, which can be extended into further modules by adding more columns. The holes are spaced every 10 cm, allowing shelves to be fixed at the desired height.

O'LIVE MULTIPLE RACK COLUMN

Support for holding the different shelves according to the products to be stored. Sold individually.



Ref: MU20500
Dimensions: 650 x 8 x 110 cm
Capacity: 2-3 Shelves



Ref: MU24400.00
Dimensions: 650 x 8 x 150 cm
Capacity: 3-4 Shelves



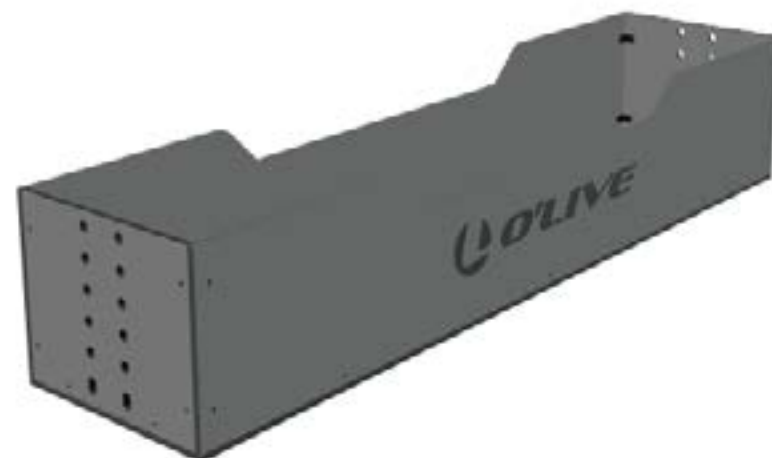
Ref: MU20700.00
Dimensions: 650 x 8 x 200 cm
Capacity: 4-5 Shelves



O'LIVE MULTIPLE RACK BOX SHELF 1700 mm

Ref: MU15500.03
Dimensions: 40 x 32 x 170 cm

Shelf suitable for storing training equipment. Can only be used in 1700 mm widths.



O'LIVE LARGE SHELF 1100 AND 1700 mm

Ref: MU21000.01 MU21100.01
Dimensions: 40 x 14 x 110 cm 40 x 14 x 170 cm

Shelf for storing hexagonal dumbbells, Pro-Style or Functional Bags. Can be installed flat or inclined according to preference.



O'LIVE MULTIPLE RACK

SMALL SHELF 1100 and 1700 mm O'LIVE

Shelf for storing products that require a not too wide surface, such as kettlebells, slam balls, functional bags.

Ref: MU21200.01 MU21300.01
Dimensions: 22 x 14 x 110 cm 22 x 14 x 170 cm



VERSATILE SHELF 1100 and 1700 mm O'LIVE

The versatile shelf allows various equipment to be stored by adding different accessories.

Ref: MU23600.00 MU23700.00
Dimensions: 25 x 8 x 110 cm 25 x 8 x 170 cm



O'LIVE DISC/BOSU SHELF 1100 and 1700 mm

Shelf for storing rubber discs (Bumper or rubber). BOSU Capacity depends on their size. (Not suitable for rubber discs)



Ref: MU21400.00 MU21500.00
Dimensions: 33 x 37 110 cm 33 x 37 170 cm

O'LIVE BALL SHELF 1100 and 1700 mm

Shelf suitable for storing functional balls, fitness balls or medicine balls. Not suitable for slam balls.



Ref: MU24100.00 MU24200.00
Dimensions: 33 x 37 110 cm 33 x 37 170 cm

O'LIVE COMPACT ADJUSTABLE HANGER

The supports are adjustable according to the distance between the mat eyelets. Not suitable for mats CL02600.00 (Fixings not included)



Ref: MU04100.01
Dimensions: 75 x 26,5 x 15 cm
Capacity: 20 u

VERSATILE SHELF ACCESSORIES



**BALL STORAGE
ACCESSORY**
Ref: MU22300.00



**ACCESORIO
COLGADOR**
Ref: MU22400.00



**TRAY FOR
ACCESORIES**
Ref: MU22600.00



**FITNESS BALL
ACCESSORY**
Ref: MU22500.00

