

O'LIVE FUNCTIONAL STRUCTURES

**ONE STEP FURTHER TO
IMPROVE YOUR SPACES**

AEROBIC & FITNESS EQUIPAMIENTO Y FORMACIÓN



O'LIVE FUNCTIONAL TOWER

We are pleased to present the new O'Live Fitness Functional Tower, the ultimate training station for those seeking a streamlined workout solution. The Tower is perfect for the most demanding athletes looking to improve their performance and build strength, without taking up much space or requiring a significant investment. The O'Live Fitness Functional Tower is a full-body training machine, meaning it offers a wide variety of exercises for the whole body thanks to its range of compatible accessories. From boxing bag work to pull-ups, this equipment features numerous options to help you achieve your fitness goals.

Manufactured from high-quality materials in the European Union. With a robust and durable frame, alongside high-quality components, this equipment is an investment built to last for years. It is also available in a version adapted for outdoor use.

The equipment is easy to use. With an optimised adjustable fixing system, you can quickly switch from one exercise to another without constantly readjusting the tower.

If you are looking to take your training to the next level, this is the machine for you.

Specifications:

- 160 x 80 x 3 mm column
- Fixing holes every 100mm
- Textured powder coating
- Multiple accessory and storage options
- Colour and logo customisation available
- Expandable and configurable
- Floor bolting required

Configuration

Ref: ES30300.01
Dimensions: 47 x 47 x 241 cm



Accessories



PLYOMETRIC PLATFORM ACCESSORY

Ref: ES34200.00



REBOUNDER ACCESSORY

Ref: ES35600.00



CONVERSOR 160 TO 80

Ref: ES33400.00



360° SUPPORT ACCESSORY

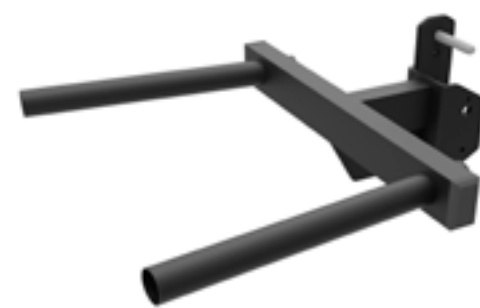
Ref: ES33201.00
Other: for column 160 mm

ES33202.00
for column 80 mm



ELASTIC RING ACCESSORY

Ref: ES17700.01



DIPS ATTACHMENT

Ref: ES16500.01



DRUM WITH ROPE ACCESSORY

Ref: ES35500.00



PULL-UP BAR ACCESSORY

Ref: EN41000.02



CANTILEVER, 800

Ref: ES33100.00



EYELET ACCESSORY WITH CARABINER

Ref: ES35901.00
Other: for column 160 mm

ES35902.00
for column 80 mm



SINGLE BRACKET ACCESSORY

Ref: ES16601.02 ES16604.02
Other: columna 80mm columna 160mm



DOUBLE BRACKET ACCESSORY

Ref: ES16602.02 ES16605.02
Other: columna 80mm columna 160mm



CORE TRAINER ACCESSORY

Ref: ES15200.01



BATTLE ROPE / STORAGE ACCESSORY

Ref: ES17400.01



ROPE SUPPORT ACCESSORY

Ref: ES34400.00



Storage



**DISC STORAGE
ACCESSORY**
Ref: ES17200.01



**BALL STORAGE
ACCESSORY**
Ref: MU22300.00



**ACCESORIO
HOOK**
Ref. MU22400.00



TRAY ACCESSORY
Ref: MU22600.00



**FITNESS BALL
ACCESSORY**
Ref: MU22500.00



**COMPACT
ADJUSTABLE HANGER**
Ref: MU04100.01



O'LIVE CORNER FUNCTIONAL



The O'Live Corner Functional Station is the perfect solution for those seeking a premium training station that allows them to perform a wide variety of exercises in a single location, making the most of corner spaces.

The station is designed to be robust and durable. Manufactured in the European Union from high-quality materials, it features a sturdy structure that guarantees stability during training. Furthermore, its elegant and modern design makes it ideal for any gym or professional training space.

The structure features a wide variety of workout and storage stations, making it perfect for functional and strength training. Accessories allow you to expand the range of training options, including boxing and suspension training, working the entire body from the leg muscles to the torso and arms.



Configuration

Ref: ES36300.00
Dimensions: 249 x 73 x 246 cm

O'LIVE BASIC WALL FUNCTIONAL



At Aerobic & Fitness we are committed to offering you multiple options in functional structures that adapt to your projects. The O'Live Wall Basic Training Station combines storage and a wall-mounted training station in one. This rack is designed to support heavy loads and is extremely sturdy, making it an excellent option for professional projects with limited space and a mid-range investment.



O'LIVE BASIC WALL FUNCTIONAL STATION, 1100

Ref: -
Dimensions: 138 x 32 x 246 cm



O'LIVE BASIC WALL FUNCTIONAL STATION EXTENSION, 1100

Ref: -
Dimensions: 130 x 32 x 246cm



O'LIVE BASIC WALL FUNCTIONAL STATION, 1700

Ref: -
Dimensions: 198 x 32 x 246 cm



O'LIVE BASIC WALL FUNCTIONAL STATION EXTENSION, 1700

Ref: -
Dimensions: 190 x 32 x 246 cm

Configurations

FUNCTIONAL PLUS WALL



The new O'Live Functional Plus Wall is the most complete and versatile training equipment of its class available on the market. With this equipment, it is possible to carry out strength and functional fitness training, as well as using it as a storage unit. Conceived and designed to the highest quality standards, this equipment allows you to perform a wide range of exercises for both the upper and lower body. Its special design provides the necessary stability without the need to fix it to the wall and without concerns about instability.

The O'Live Functional Plus Wall is easy to use, thanks to its fixing system that allows you to adjust the shelves

www.aerobicfitness.com

and other accessories according to your needs and training level. It is available in two widths, 1100 mm and 1700 mm, offering the possibility of expanding it as required.

It also includes a range of accessories and add-ons that adapt to the user's needs, providing even more exercise possibilities. Its compact size allows it to be placed in any space without having to worry about dimensions or weight. If you want to take your training to the next level, the O'Live Functional Plus Wall is the perfect choice.



O'LIVE FUNCTIONAL PLUS STATION, 1.1 m

Ref: ES32601.01
Dimensions: 137 x 70 x 246 cm



O'LIVE FUNCTIONAL PLUS STATION EXTENSION, 1.1 m

Ref: ES32701.01
Dimensions: 124 x 70 x 246 cm



O'LIVE FUNCTIONAL PLUS STATION, 1.7 m

Ref: ES32600.01
Dimensions: 197 x 70 x 246 cm



O'LIVE FUNCTIONAL PLUS STATION EXTENSION, 1.7 m

Ref: ES32700.01
Dimensions: 184 x 70 x 246 cm

Accessories



L-CEILING 1100 FOR 160 X 80 COLUMN

Ref: ES32801.00



DRUM WITH ROPE ACCESSORY

Ref: ES35500.00



SINGLE BRACKET ACCESSORY

Ref: ES16601.02 ES16604.02 ES16606.02 ES16602.02 ES16605.02 ES16607.02
 Other: columna 80mm columna 160mm para extremos columna 80mm columna 160mm para extremos



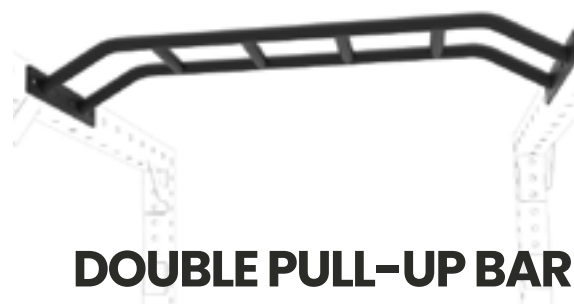
CORE TRAINER ACCESSORY

Ref: ES15200.01



O'LIVE MULTI-GRIP PULL-UP BAR CROSSBEAM 1100 OR 1700

Ref: ES36501.00 1700 mm
 ES36502.00 1100 mm



DOUBLE PULL-UP BAR ACCESSORY, 1.1

Ref: ES33600.00



DOUBLE BRACKET ACCESSORY

Ref:
 Other:



ROPE SUPPORT ACCESSORY

Ref: ES34400.00



J-CUPS ELITE, PAIR

Ref: ES16200.01



SAFETY ARMS, PAIR

Ref: ES16300.01



ELASTIC RING ACCESSORY

Ref: ES17700.01



MONKEY BAR ACCESSORY

Ref: ES31605.00 ES31606.00
 Dimensions: 1100 mm 1700 mm



BATTLE ROPE / STORAGE ACCESSORY

Ref: ES17400.01



MOVEABLE BAR ACCESSORY

Ref: ES35200.00



CANTILEVER, 800

Ref: ES33100.00



EYELET ACCESSORY WITH CARABINER

Ref: ES35901.00 ES35902.00
 Other: for column 160 mm for column 80 mm



DIP ACCESSORY

Ref: ES16500.01



REBOUNDER ACCESSORY

Ref: ES35600.00



360° SUPPORT ACCESSORY

Ref: ES33201.00 ES33202.00
 Other: for columns 160 mm for columns 80 mm

FUNCTIONAL PLUS BRIDGE



The O'Live Functional Plus Bridge is easy to use, thanks to its fixing system that allows you to adjust the shelves and other accessories according to your needs and training level, with a width of 1700 mm (1100 mm option available), offering the possibility of expanding it as required.

It also includes a range of accessories and add-ons that adapt to the user's needs, providing even more exercise possibilities. Its compact size allows it to be placed in any space without having to worry about dimensions or weight. If you want to take your training to the next level, the O'Live Functional Plus is the perfect choice.



O'LIVE FUNCTIONAL PLUS BRIDGE STATION, 3 m

Ref: ES36601.00
Dimensions: 3348 x 1975 x 2557 mm

O'LIVE FUNCTIONAL PLUS BRIDGE STATION, 5 m

Ref: ES36602.00
Dimensions: 5099 x 1975 x 2557 mm



O'LIVE FUNCTIONAL PLUS BRIDGE STATION, 7 m

Ref: ES36603.00
Dimensions: 7145 x 1975 x 2557 mm

We present the O'Live Functional Plus Bridge, a next-generation fitness piece of equipment that stands out as the most complete and versatile in its category. Power up your strength and functional fitness training with this exceptional piece of equipment, which also functions as a storage unit for added convenience.

EXPANSION ACCESSORIES

FUNCTIONAL STATION EXTENSION PLUS O'LIVE, 1.1 m

Ref: ES32701.01
Dimensions: 124 x 70 x 246cm



L-CEILING 1100 FOR 160 X 80 COLUMN

Ref: ES32801.00



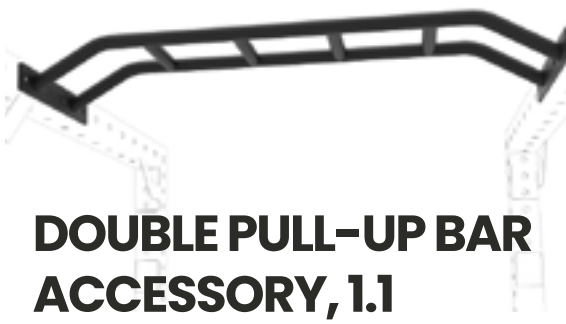
O'LIVE MULTI-GRIP PULL-UP BAR CROSSBEAM 1100 OR 1700

Ref: ES36502.00 1700 mm
ES36501.00 1100 mm



FUNCTIONAL STATION EXTENSION PLUS O'LIVE, 1.7 mm

Ref: ES32700.01
Dimensions: 184 x 70 x 246 cm



DOUBLE PULL-UP BAR ACCESSORY, 1.1

Ref: ES33600.00



MONKEY BAR ACCESSORY

Ref: ES31605.00 ES31606.00
Dimensions: 1100 mm 1700 mm



SAFETY ARMS, PAIR

Ref: ES16300.01



CORE TRAINER ACCESSORY

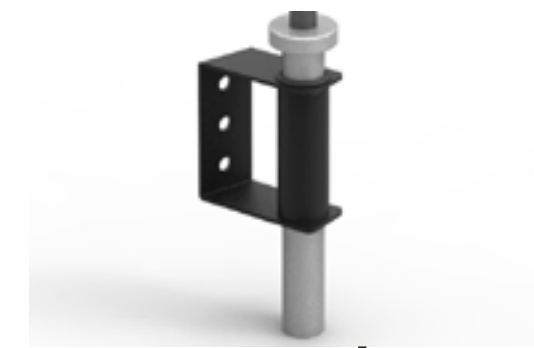
Ref: ES15200.01

Accessories



J-CUPS ELITE, PAIR

Ref: ES16200.01



BATTLE ROPE / STORAGE ACCESSORY

Ref: ES17400.01



DIP ACCESSORY

Ref: ES16500.01



ROPE SUPPORT ACCESSORY

Ref: ES34400.00



MOVEABLE BAR ACCESSORY

Ref: ES35200.00



REBOUNDER ACCESSORY

Ref: ES35600.00



SINGLE BRACKET ACCESSORY

Ref: ES16601.02 ES16606.02
Other: columna 80mm Para extremos



DOUBLE BRACKET ACCESSORY

Ref: ES16602.02 ES16607.02
Other: columna 80mm Para extremos



ELASTIC RING ACCESSORY

Ref: ES17700.01



CANTILEVER, 800

Ref: ES33100.00



DRUM WITH ROPE ACCESSORY

Ref: ES35500.00



EYELET ACCESSORY WITH CARABINER

Ref: ES35901.00 ES35902.00
Other: for column 160 mm for column 80 mm



360° SUPPORT ACCESSORY

Ref: ES33201.00 ES33202.00
Other: for columns 160 mm for columns 80 mm

SELF-SUPPORTING FUNCTIONAL PLUS STATION WITH STORAGE

The O'Live Functional Plus Wall Storage is the most complete and versatile training equipment available. In addition to its storage function, it allows strength and functional conditioning exercises. Requires at least 3 shelves per module for stability. Designed to the highest quality standards for both upper and lower body exercises, with no need to fix it to the wall, guaranteeing total stability. A complete solution for an exceptional training experience.

www.aerobicfitness.com

The O'Live Functional Plus Wall Storage is characterised by its ease of use, thanks to an ingenious fixing system that allows you to customise the shelves and accessories according to your own needs and training level. It is available in two different widths, 1100 mm and 1700 mm, giving you the flexibility to expand it as required.

Additionally, this solution includes a wide variety of accessories and add-ons designed to adapt to user preferences, further expanding exercise possibilities. Its compact design allows it to be placed effortlessly in any space, without concerns about size or weight. If you are looking to take your training to a higher level, the O'Live Functional Plus Wall presents itself as the ideal choice.



SELF-SUPPORTING FUNCTIONAL PLUS STATION WITH STORAGE O'LIVE, 1.1 m

Ref: ES32603.01
Dimensions: 137 x 70 x 246 cm



EXTENSION SELF-SUPPORTING FUNCTIONAL PLUS STATION WITH STORAGE O'LIVE, 1.1 m

Ref: ES32703.01
Dimensions: 124 x 70 x 246 cm



SELF-SUPPORTING FUNCTIONAL PLUS STATION WITH STORAGE O'LIVE, 1.7 m

Ref: ES32602.01
Dimensions: 197 x 70 x 246 cm



EXTENSION SELF-SUPPORTING FUNCTIONAL PLUS STATION WITH STORAGE O'LIVE, 1.7 m

Ref: ES32702.01
Dimensions: 184 x 70 x 246 cm

configurations

Accessories



DRUM WITH ROPE ACCESSORY

Ref: ES35500.00



DOUBLE PULL-UP BAR ACCESSORY, 1.1

Ref: ES33600.00



SINGLE BRACKET ACCESSORY

Ref: ES16601.02 ES16604.02 ES16606.02
Other: columna 80mm columna 160mm para extremos



DOUBLE BRACKET ACCESSORY

Ref: ES16602.02 ES16605.02 ES16607.02
Other: columna 80mm columna 160mm para extremos



CORE TRAINER ACCESSORY

Ref: ES15200.01



ROPE SUPPORT ACCESSORY

Ref: ES34400.00



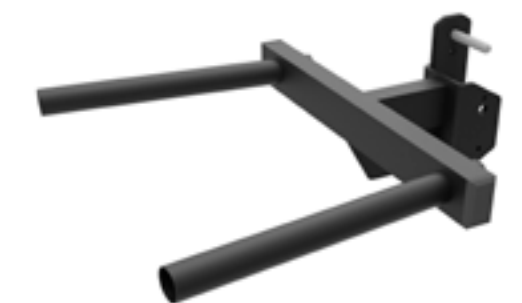
ACCESORIO J-CUPS ELITE, PAIR

Ref: ES16200.01



BATTLE ROPE / STORAGE ACCESSORY

Ref: ES17400.01



DIP ACCESSORY

Ref: ES16500.01



SAFETY ARMS, PAIR

Ref: ES16300.01



MOVEABLE BAR ACCESSORY

Ref: ES35200.00



REBOUNDER ACCESSORY

Ref: ES35600.00



ELASTIC RING ACCESSORY

Ref: ES17700.01



CANTILEVER, 800

Ref: ES33100.00



360° SUPPORT ACCESSORY

Ref: ES33201.00 ES33202.00
Other: for columns 160 mm for columns 80 mm



MONKEY BAR ACCESSORY

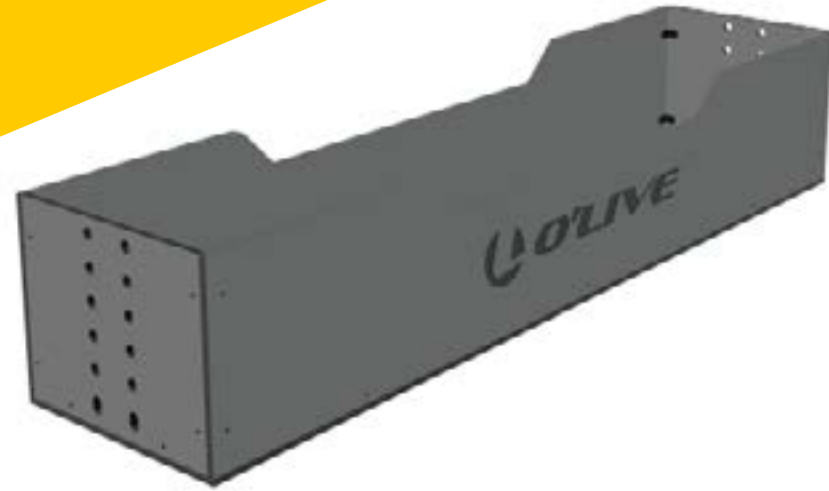
Ref: ES31605.00 ES31606.00
Dimensions: 1100 mm 1700 mm



EYELET ACCESSORY WITH CARABINER

Ref: ES35901.00 ES35902.00
Other: for column 160 mm for column 80 mm

Storage



BOX SHELF, 1700

Ref: MU15500.03



COMPACT ADJUSTABLE HANGER

Ref: MU04100.01



SMALL SHELF, 1100

Ref. MU21200.00



SMALL SHELF, 1700

Ref. MU21300.00



LARGE SHELF, 1100

Ref. MU21000.00



LARGE SHELF, 1700

Ref. MU21100.00



DISC STORAGE ACCESSORY

Ref: ES17200.01



BALL STORAGE ACCESSORY

Ref: MU22300.00



ACCESORIO HOOK

Ref. MU22400.00



BALL SHELF 1100

Ref. MU24100.00



BALL SHELF 1700

Ref. MU24200.00

1100 MU23600.00 + MU22400.00



TRAY ACCESSORY

Ref: MU22600.00



FITNESS BALL ACCESSORY

Ref: MU22500.00

1700 MU23700.00 + MU22400.00



VERSATILE SHELF

Ref. MU23600.00 MU23700.00
Other 1100mm 1700mm



PUMP DISC STORAGE ACCESSORY

Ref: MU23800.00



O'LIVE DISC SHELF 1100

Ref. MU21400.00



O'LIVE DISC SHELF 1700

Ref. MU21500.00



SHELF OPTIONS

O'LIVE BASIC FUNCTIONAL



O'LIVE

FITNESS

The O'Live Basic Functional Rig is the best option if you are looking for high-quality and durable training equipment. It is manufactured in the European Union from high-resistance materials, making it ideal for withstanding intense and high-frequency training sessions. Its modular design also allows you to customise the structure according to your training needs and objectives.

This equipment is ideal for any type of strength and fitness training, including barbell exercises, rings, pull-ups, push-ups, dips and much more. It is also perfect for Cross Training workouts, as its modular design allows you to adapt it to any WOD you wish to perform.

Specifications:

- 80x80x3mm column
- Fixing holes every 50mm
- Textured powder coating
- 33mm pull-up bars
- Multiple accessories and storage available
- Expandable and configurable



Ref: ES37100.00

As experts in sports equipment, our objective is to help you find the best training equipment. One of our star products for this season is the New O'Live Basic Functional Rig.

What is the Basic Functional Rig?

It is a multifunctional training structure designed to support a wide variety of strength and fitness exercises. This structure is self-supporting, meaning you do not need to fix it to the wall or floor to use it, although floor fixing is required if cantilever supports are used or if swinging movements are performed. This makes it a very versatile and easy-to-install option anywhere, and it also features a coating that allows it to be placed in indoor areas.

Configuration

Ref: ES36400.00
Dimensions: 136 x 156 x 246 cm



**EXPANSION
ACCESSORIES**



**O'LIVE MULTI-GRIP PULL-UP
BAR CROSSBEAM 1100**

Ref: ES36501.00



**MONKEY BAR
ACCESSORY**

Ref: ES31605.00
Dimensions: 1100 mm



O'LIVE CROSSBEAM

Ref: ES31401.00 ES31402.00 ES31404.00
Dimensions: 1100 mm 1700 mm 2200 mm



REINFORCED BAR

Ref: ES31602.00
Dimensions: 1700 mm

TRIM COVER

Ref: ES33302.00
Dimensions: 170 x 56 x 23.8 cm



CROSSBEAM

Ref: ES31302.00
Dimensions: 170 x 56 x 23.8 cm



Accessories



J-CUPS ELITE, PAIR

Ref: ES16200.01



J-CUPS BASIC, PAIR

Ref: ES30400.01



DIP ACCESSORY

Ref: ES16500.01



SAFETY ARMS, PAIR

Ref: ES16300.01



**SAFETY BARS
ACCESSORY, PAIR**

Ref: ES34300.00



**SAFETY STRAPS
ACCESSORY, PAIR**

Ref: ES17600.01

**SINGLE BRACKET
ACCESSORY**



Ref: ES16601.02
Other: 80mm column

ES16604.02
160mm column

**DOUBLE BRACKET
ACCESSORY**



Ref: ES16602.02 ES16605.02
Other: columna 80mm columna 160mm



**LEVER ARMS
ACCESSORY, PAIR**

Ref: ES35100.00



**DRUM WITH ROPE
ACCESSORY**

Ref: ES35500.00



**PLYOMETRIC
PLATFORM
ACCESSORY**

Ref: ES34200.00



**MOVEABLE BAR
ACCESSORY**

Ref: ES35200.00



**CORE TRAINER
ACCESSORY**

Ref: ES15200.01



**BATTLE ROPE /
STORAGE ACCESSORY**

Ref: ES17400.01



**ROPE SUPPORT
ACCESSORY**

Ref: ES34400.00



**MOVEABLE BAR
ACCESSORY**

Ref: ES35600.00



**ELASTIC RING
ACCESSORY**

Ref: ES17700.01

**SUPERBAND RACK
ACCESSORY, PAIR**

Ref: ES35300.00



**EYELET ACCESSORY
WITH CARABINER**

Ref: ES35901.00 ES35902.00
Other: for column 160 mm for column 80 mm



CANTILEVER, 800

Ref: ES33100.00



**ACCESORIO
SOPORTE 360°**

Ref: ES33201.00 ES33202.00
Other: for columns 160 mm for columns 80 mm



**DISC STORAGE
ACCESSORY**

Ref: ES17200.01



SMALL SHELF, 1100

Ref: MU21200.00



SMALL SHELF, 1700

Ref: MU21300.00



BOX SHELF, 1700

Ref: MU15500.03

1100 MU23600.00 + MU22400.00



1700 MU23700.00 + MU22400.00



VERSATILE SHELF

Ref: MU23600.00 MU23700.00
Other: 1100mm 1700mm

Storage



**BALL STORAGE
ACCESSORY**

Ref: MU22300.00



LARGE SHELF, 1100

Ref: MU21000.00



LARGE SHELF, 1700

Ref: MU21100.00



**ACCESORIO
HOOK**

Ref: MU22400.00



BALL SHELF 1100

Ref: MU24100.00



BALL SHELF 1700

Ref: MU24200.00



**COMPACT
ADJUSTABLE HANGER**

Ref: MU04100.01



TRAY ACCESSORY

Ref: MU22600.00



O'LIVE DISC SHELF 1100

Ref: MU21400.00



O'LIVE DISC SHELF 1700

Ref: MU21500.00

SHELF OPTIONS



Revolutionise your spaces with the FCS O'Live Basic Training Stations: your all-in-one solution for professional training. Designed by O'Live Fitness, this station combines versatility and robustness in a compact and elegant design.

Personalise your space with modular flexibility that adapts perfectly to your needs, choose between widths of 1.1 and 1.7 metres and optimise space with a depth of just 84 cm. Its 80x80x3mm column structure ensures exceptional stability and durability, whilst the pull-up bars, with a diameter of 32 mm, offer the perfect grip for all training levels.

FUNCTIONAL CROSS STATION BASIC

www.aerobicfitness.com



FCS O'LIVE BASIC

Ref: ES18701.01
Dimensions: 110 x 194 x 270 cm

EXTENSIONS



Ref: ES18801.01
Dimensions: 110 x 194 x 270 cm



Ref: ES18802.01
Dimensions: 170 x 194 x 270 cm



FCS O'LIVE BASIC SMART

Ref: ES18706.01
Dimensions: 110 x 134 x 270 cm

SMART EXTENSIONS



Ref: ES18803.01
Dimensions: 110 x 134 x 270 cm



Ref: ES18804.01
Dimensions: 170 x 134 x 270 cm



FCS O'LIVE BASIC OPTIMIZADA

Ref: ES18707.01
Dimensions: 110 x 84 x 270 cm

OPTIMISED EXTENSIONS



Ref: ES18805.01
Dimensions: 110 x 84 x 270 cm



Ref: ES18806.01
Dimensions: 170 x 84 x 270 cm

Configurations



FUNCTIONAL CROSS STATION BASIC WALL

Designed for those who demand the very best, this station transforms any gym or fitness centre into a high-performance space. Its flexible modular system, available in widths of 1.1 and 1.7 metres, adapts to any environment, optimising space usage without compromising functionality.

Built from premium-quality materials, its 80x80x3 mm columns guarantee incomparable stability, supporting the most intensive training sessions with safety and confidence. Furthermore, its generous dimensions (182 cm depth and 270 cm height) offer ample space to perform a variety of exercises, from pull-ups to advanced strength training.



F.C.S WALL O'LIVE
Ref: ES18901.01
Dimensions: 110 x 182 x 270 cm

EXTENSIONS



Ref: ES19001.01
Dimensions: 110 x 182 x 270 cm



Ref: ES19002.01
Dimensions: 170 x 182 x 270 cm



F.C.S WALL BASIC SMART
Ref: ES18906.01
Dimensions: 110 x 122 x 270 cm

SMART EXTENSIONS



Ref: ES19003.01
Dimensions: 110 x 122 x 270 cm



Ref: ES19004.01
Dimensions: 170 x 122 x 270 cm



**F.C.S WALL O'LIVE
BASIC OPTIMIZADA**
Ref: ES18907.01
Dimensions: 110 x 28 x 270 cm

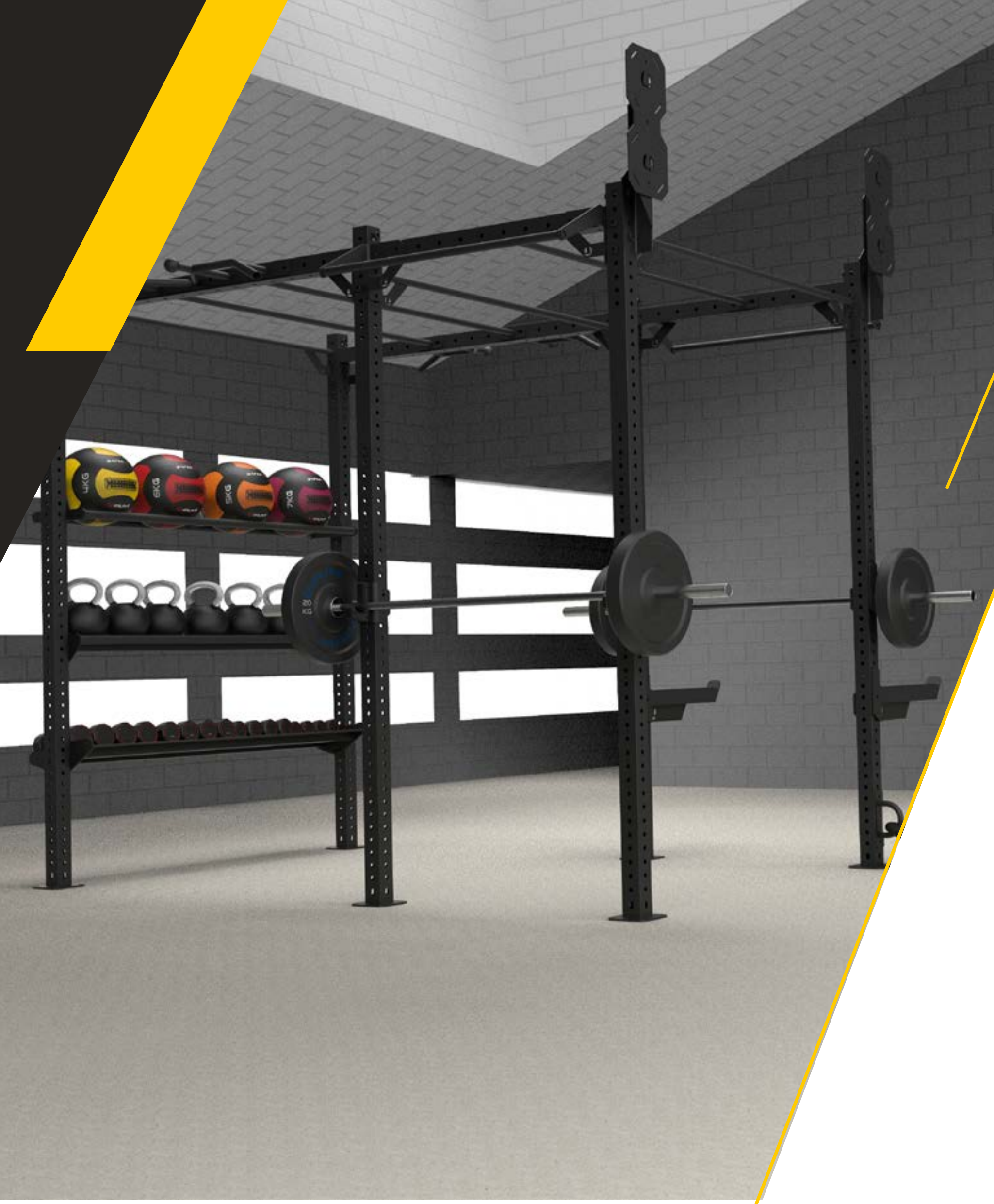
OPTIMISED EXTENSIONS



Ref: ES19005.01
Dimensions: 110 x 28 x 270 cm



Ref: ES19006.01
Dimensions: 170 x 28 x 270 cm



Designed for fitness enthusiasts seeking professional quality and total customisation, this modular station offers incomparable stability and an optimal space for any type of routine.

With a versatile and adaptable design, you can configure the FCS PLUS to your requirements, with width options of 1.1 and 1.7 metres, and the ability to add monkey bars and “monkey” y de dominadas con diferentes agarres. Built with robust 80x80x3 mm columns, this station supports the most demanding training sessions, ensuring the rigidity and stability you need for the most intensive sessions.

FUNCTIONAL CROSS STATION PLUS

www.aerobicyfitness.com



F.C.S O'LIVE PLUS
 Ref: ES19101.01
 Dimensions: 110 x 194 x 270 cm

EXTENSIONS



Ref: ES19201.01
 Dimensions: 110 x 194 x 270 cm



Ref: ES19202.01
 Dimensions: 170 x 194 x 270 cm



F.C.S O'LIVE PLUS SMART
 Ref: ES19106.01
 Dimensions: 110 x 134 x 270 cm

SMART EXTENSIONS



Ref: ES19203.01
 Dimensions: 110 x 134 x 270 cm



Ref: ES19204.01
 Dimensions: 170 x 134 x 270 cm



F.C.S O'LIVE PLUS OPTIMIZADA
 Ref: ES19107.01
 Dimensions: 110 x 84 x 270 cm

OPTIMISED EXTENSIONS



Ref: ES19205.01
 Dimensions: 110 x 84 x 270 cm



Ref: ES19206.01
 Dimensions: 170 x 84 x 270 cm

Configurations



FUNCTIONAL CROSS STATION PLUS WALL

Transform your training space with the O'Live Fitness FCS Plus Modular Training Station, designed for true fitness enthusiasts seeking versatility and professional performance. This modular system adapts perfectly to your needs, offering a robust and customisable solution that takes your training to the next level.

With unique customisation options, the FCS Plus allows you to add "monkey" y pull-up bars with different grips, so you can diversify your routine and focus on the muscle groups that interest you most. Its 80x80x3 mm column structure ensures unmatched stability, even during the most demanding sessions.



F.C.S WALL O'LIVE PLUS
Ref: ES19301.01
Dimensions: 110 x 182 x 270 cm

EXTENSIONS



Ref: ES19501.01
Dimensions: 110 x 182 x 270 cm



Ref: ES19502.01
Dimensions: 170 x 182 x 270 cm



F.C.S WALLPLUS SMART
Ref: ES19306.01
Dimensions: 110 x 122 x 270cm

SMART EXTENSIONS



Ref: ES19503.01
Dimensions: 110 x 122 x 270 cm



Ref: ES19504.01
Dimensions: 170 x 122 x 270 cm



F.C.S WALL O'LIVE PLUS OPTIMIZED
Ref: ES19307.01
Dimensions: 110 x 84 x 270 cm

OPTIMISED EXTENSIONS



Ref: ES19505.01
Dimensions: 110 x 84 x 270 cm



Ref: ES19506.01
Dimensions: 170 x 84 x 270 cm

FCS Accessories

**SINGLE BRACKET
ACCESSORY**



Ref:
Other:
ES16601.02
80mm column

ES16604.02
160mm column

**DOUBLE BRACKET
ACCESSORY**



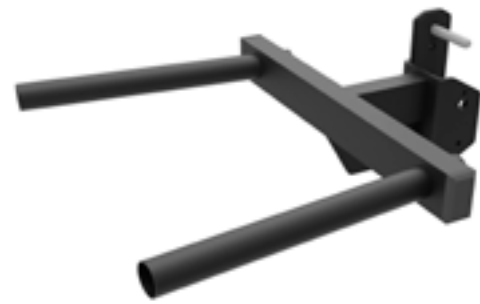
Ref: ES16602.02 ES16605.02
Other: columna 80mm columna 160mm



**INCLINED LADDER
1100 mm**
Ref: ES22201.02



**INCLINED LADDER
1700 mm**
Ref: ES22202.02



DIPS ATTACHMENT
Ref: ES16500.01



**DRUM WITH ROPE
ACCESSORY**
Ref: ES35500.00



**ROPE SUPPORT
ACCESSORY**
Ref: ES34400.00



**CANTILEVER BAR
1100 mm**
Ref: ES16901.01



**CANTILEVER BAR
1700 mm**
Ref: ES16902.01



**CORE TRAINER
ACCESSORY**
Ref: ES15200.01



**BATTLE ROPE /
STORAGE ACCESSORY**
Ref: ES17400.01



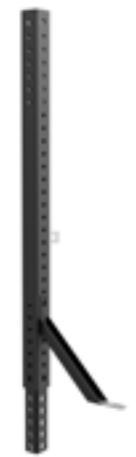
**EYELET ACCESSORY
WITH CARABINER**
Ref: ES35901.00 ES35902.00
Other: for column 160 mm for column 80 mm



**REBOUNDER
ACCESSORY**
Ref: ES35600.00



MOVABLE BAR
Ref: ES35200.00 ES35200.01
Other: 1100 mm 1700 mm



**HEIGHT
FCS**
Ref: ES39300.00



**ELASTIC RING
ACCESSORY**
Ref: ES17700.01



CANTILEVER, 800 mm
Ref: ES33100.00



CANTILEVER, 1050
Ref: ES33000.00



J-CUPS ELITE, PAIR
Ref: ES16200.01



J-CUPS BASIC, PAIR
Ref: ES30400.01



**SAFETY BARS
ACCESSORY, PAIR**
Ref: ES34300.00

Storage FCS



**COMPACT
ADJUSTABLE HANGER**
Ref: MU04100.01



SMALL SHELF, 1100

Ref. MU21200.00



SMALL SHELF, 1700

Ref. MU21300.00

BOX SHELF, 1700

Ref: MU15500.03



LARGE SHELF, 1100

Ref. MU21000.00



LARGE SHELF, 1700

Ref. MU21100.00



**DISC STORAGE
ACCESSORY**

Ref: ES17200.01



**BALL STORAGE
ACCESSORY**

Ref: MU22300.00



**ACCESORIO
HOOK**

Ref. MU22400.00



BALL SHELF 1100

Ref. MU24100.00



BALL SHELF 1700

Ref. MU24200.00

1100 MU23600.00 + MU22400.00



1700 MU23700.00 + MU22400.00



VERSATILE SHELF

Ref. MU23600.00 MU23700.00
Other 1100mm 1700mm



TRAY ACCESSORY
Ref: MU22600.00



**FITNESS BALL
ACCESSORY**
Ref: MU22500.00



O'LIVE DISC SHELF 1100

Ref. MU21400.00



O'LIVE DISC SHELF 1700

Ref. MU21500.00



SHELF OPTIONS

Outdoor Areas



OUTDOOR RIG CUBE O'LIVE

PORTABLE TRAINING STRUCTURE

Ref: ES32100.00
Dimensions: 141.5 x 116.8 x 236.5 cm
Other: Storage box: 141.5 x 60.5 x 53

The ORC station is the perfect solution for safe and effective exercise. Its compact form makes it highly attractive, and to that you can add one of the best features on the market: **ASSEMBLY IN UNDER 15 MINUTES**. You can now enjoy the benefits of a functional and cross training structure in record time.

But do I need a specific space to train with the ORC station? **NO!** In addition to its easy assembly, its added value lies in being self-supporting — that's right, there is no need to fix it to the floor, so you can change your training location whenever you wish. Ready? You can move the ORC station effortlessly thanks to its side wheels. Watch the video here

Finally, this product addresses a basic training need: multifunctional storage, as it allows you to store the structure internally for transport and relocation of the ORC station whenever desired.

What's new in the ORC station?

As mentioned above, one of the ORC's standout features is that it is not a fixed structure, meaning it does not need to be anchored to the floor — making it ideal for terraces, gardens or rooftops that cannot be drilled. It can be easily relocated or stored away seasonally.

Its design also allows multiple people to train simultaneously while maintaining the required safety distance.

The storage box allows you to store additional training materials such as dumbbells, kettlebells, sandbags or functional bags, agility ladders, cones, hurdles — in short, you can store all the materials needed to set up a complete training zone.





Pull-up bar, Suspension or Boxing

O'LIVE ORC CONNECTING BAR

Ref: ES32300.00



Adjustable bar support



Easy resistance band attachment



Adjustable closure accessory for Olympic bar.

Ref: ES32200.00



Dip accessory

Ref: ES32400.00

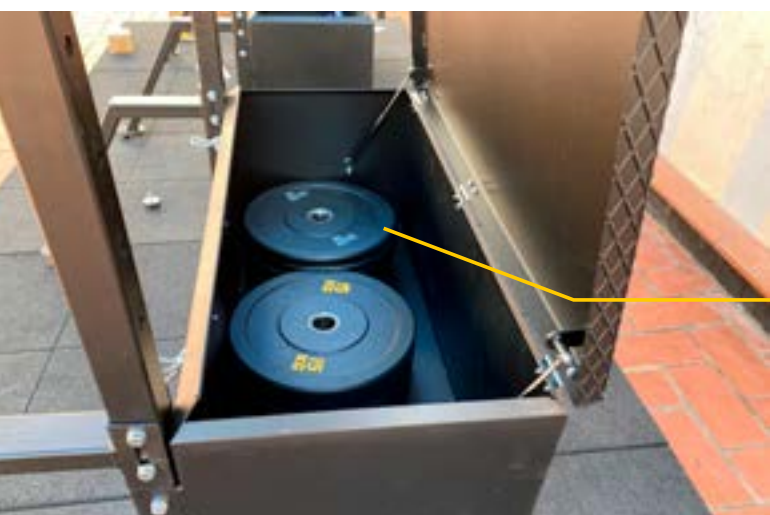


Damped opening and closing



Closure with padlock option

Plyometric box with non-slip surface, self-supporting and adjustable.



High-capacity airtight storage.





CLUB NATACIÓ DE MATARÓ
FCS Plus



ACCURA SANT BOI
FCS Plus



CENTRO FITNESS ROVERETO (Italy)
FCS Custom



IKOS OLIVIA HOTEL, GREECE
Container 10' + FCS Plus



HOTEL HIGUERON, FUENGIROLA, MALAGA
Container 20' + Pull-Up Bar

