



REAL MOTION

THE FUNCTIONAL COMPANY

SPORTS FLOORING CATALOGUE

SBR MODULAR RUBBER

Τα αθλητικά δάπεδα από SBR(Styrene Butadiene Rubber) παράγονται από ανακυκλωμένο καουτσούκ. Είναι διαθέσιμα ανάλογα με το πάχος από 1,5 έως 5 εκατοστά, διαφορετικά σχήματα καθώς και διαφορετικά χρώματα.

Χάρη στη απορρόφηση των κραδασμών που προσφέρει είναι κατάλληλο για χρήση σε χώρους γυμναστικής, εξωτερικούς χώρους και παιδικές χαρές και μπορεί να βοηθήσει στην αποφυγή των τραυματισμών.

Είναι υγιεινό και καθαρίζεται εύκολα , ενώ είναι εύκολο και να επισκευαστεί. Έχει πολλές διαφορετικές χρήσεις τόσο σε εσωτερικό όσο και σε εξωτερικό χώρο

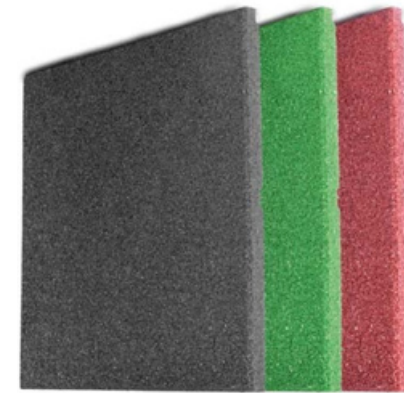


SBR (Styrene Butadiene Rubber) rubbers a synthetic rubber that has a wide range of uses, produced using recycled raw materials. available in different colors. Different thicknesses and shapes can be selected from 2cm to 5cm.

Thanks to its shock absorbing and flexible feature, traumatic areas such as playgrounds, sports halls and stables is a useful floor covering product that can reduce the effect of injuries. It is more hygienic and cleaner than other flooring materials. Thanks to the rain, it can be easily cleaned and it is easy to repair.

It is possible to use in indoor and outdoor playgrounds, bicycle paths, traffic training tracks, tanning and walking paths.

SBR TILE RUBBER



COLOR OPTION



PRODUCT SIZES

WIDHT	LENGTH	THICKNESS
40 cm	40 cm	20 - 25 - 30 - 40 mm
50 cm	50 cm	20 - 25 - 30 - 40 mm
60 cm	60 cm	20 - 25 - 30 - 40 mm

FLOOR COVERINGS

SBR PUZZLE RUBBER



COLOR OPTION



PRODUCT SIZES		
WIDHT	LENGTH	THICKNESS
40 cm	60 cm	25 - 30 - 40 mm

SBR HEXAGONAL RUBBER



COLOR OPTION



PRODUCT SIZES		
WIDHT	LENGTH	THICKNESS
42,5 cm	49 cm	20 - 25 - 30 - 40 mm

FLOOR COVERINGS

SBR KEYSTONE



PRODUCT SIZES		
WIDHT	LENGTH	THICKNESS ;
25 cm	20 cm	20 - 25 - 30 - 40 mm

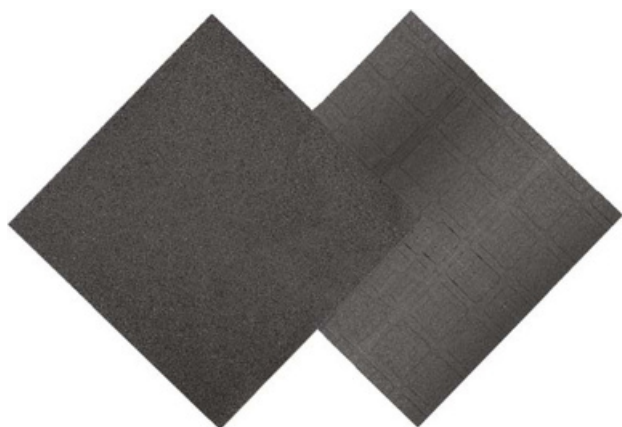
SBR BORDER



PRODUCT SIZES		
WIDHT	LENGTH	THICKNESS ;
50 cm	17 cm	13,5 cm

FLOOR COVERINGS

SBR BLOCK RUBBER



COLOR OPTION



PRODUCT INFORMATION

Block - Puzzle		
Dimensions	Weight	Price
BLOCK 100* 100*1,5 CM	14-15	25,30 €
BLOCK 100* 100*2,0 CM	18-19	30,58 €
BLOCK 100* 100*2,5 CM	22-23	36,30 €
BLOCK 100* 100*3,0 CM	26-27	41,14 €
BLOCK 100* 100*4,0 CM	35-36	52,80 €
BLOCK 100* 100*5,0 CM	43-44	62,70 €



FLOOR COVERINGS

100x100cm SBR BLOCK RUBBER TECHNICAL SPECIFICATIONS

Rubber ground application is completed by compressing the existing flooring starting from a minimum of 17 cm (To be determined according to the thickness of the rubber to be applied) below the level of the upper and lower border of the trimmed and flowed border, minimum 5 cm of gravel, minimum 10 cm of steel mesh C 20-25 ready mixed concrete, minimum 3 cm of Helicopter screed will be made with polyurethane based adhesive.

According to the results of the chemical analysis, 100% recycled rubber granules in calibrations of 1,00-3,00 mm with certificate of conformity to DIN 18035-7 Standards are passed through the sieve and cleaned. It is poured into each box of 100 x 100 cm, mixed with polyurethane based single component binder and color pigments resistant to UV rays by automatic mixers. Rubber presses are manufactured by baking for a certain period by applying heat treatment (150-180 ° C) and pressure (200 bar) according to their thickness.

The polyurethane based one component binder should not be less than 6% in the production of molded rubbers. Iron oxide for red color and chromium oxide pigments for green color should be used in the production of rubber materials.

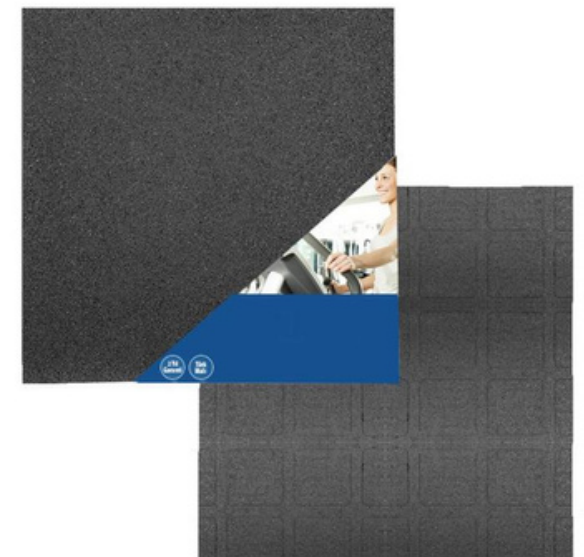
Average 1 square meter weight of modular rubber materials; it should be as follows:

- For 15 mm 14,00-15,00 kg
- For 20 mm 18,00-19,00 kg
- For 25 mm 21,50-22,50 kg
- For 30 mm 26,00-27,00 kg
- For 40 mm 36,00-37,00 kg

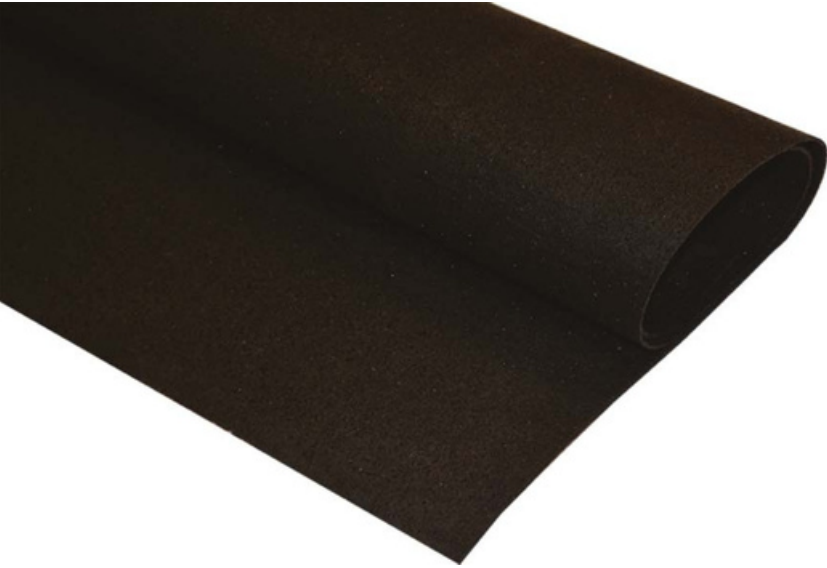
The edges of the block rubber model have recesses and protrusions with a depth of 3,1 cm and a length of 15,5 cm.

Because the material to be laid on the floor is water permeable, the bottom of the material should have channels 20 mm wide and 2 mm deep to provide drainage.

The chamfers must be withdrawn so as to form a joint on the edge portions to allow the surface water on the surface of the rubber materials to pass through.



FLOOR COVERINGS

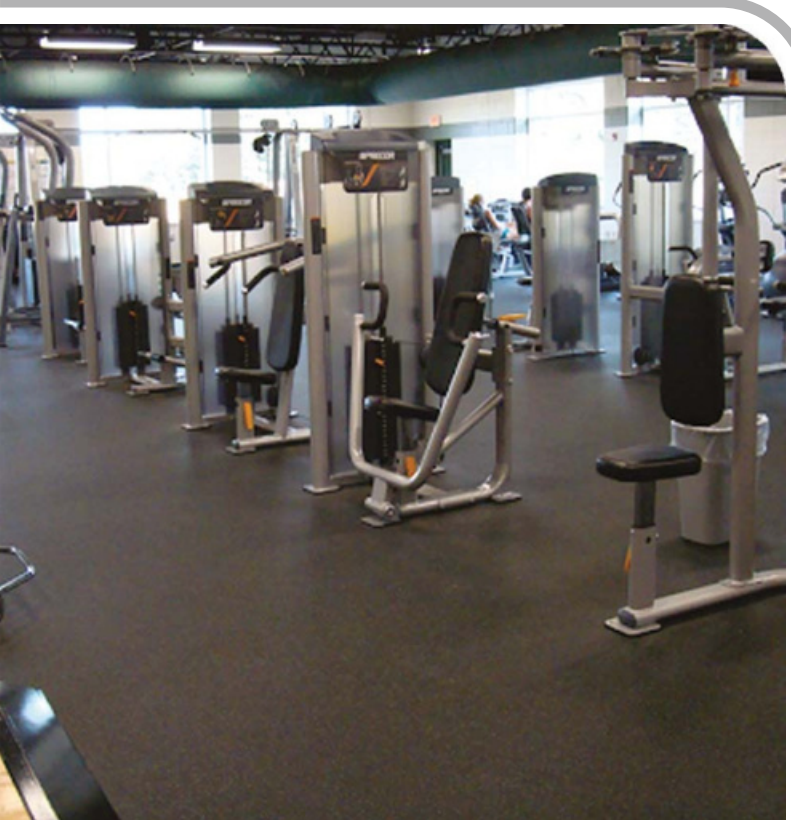
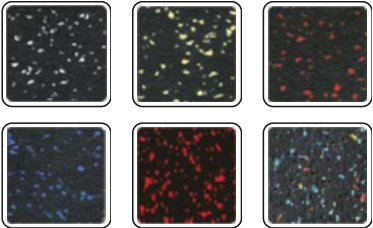


SBR ROLL RUBBER

COLOR OPTION



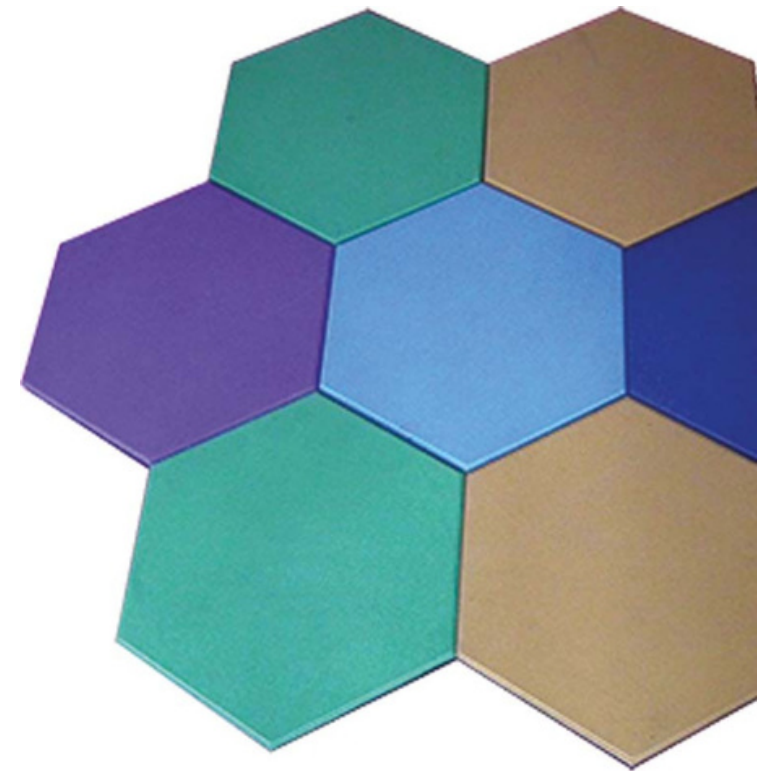
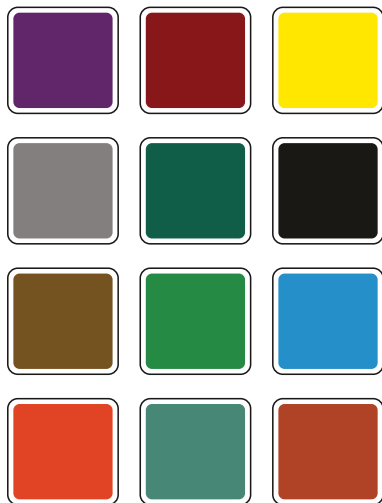
SBR WITH EPDM ROLL RUBBER COLOR OPTION



FLOOR COVERINGS

EPDM HEXAGONAL RUBBER

COLOR OPTION



PRODUCT SIZES		
WIDHT	LENGTH	THICKNESS
42,5 cm	49 cm	25 mm (18+7)
42,5 cm	49 cm	30 mm (23+7)

REAL MOTION

THE FUNCTIONAL COMPANY



real-motion.eu

6 Vizantiou str., 16 562, Glyfada,
Athens, Greece

(+30) 210 9 631 100

info@real-motion.eu